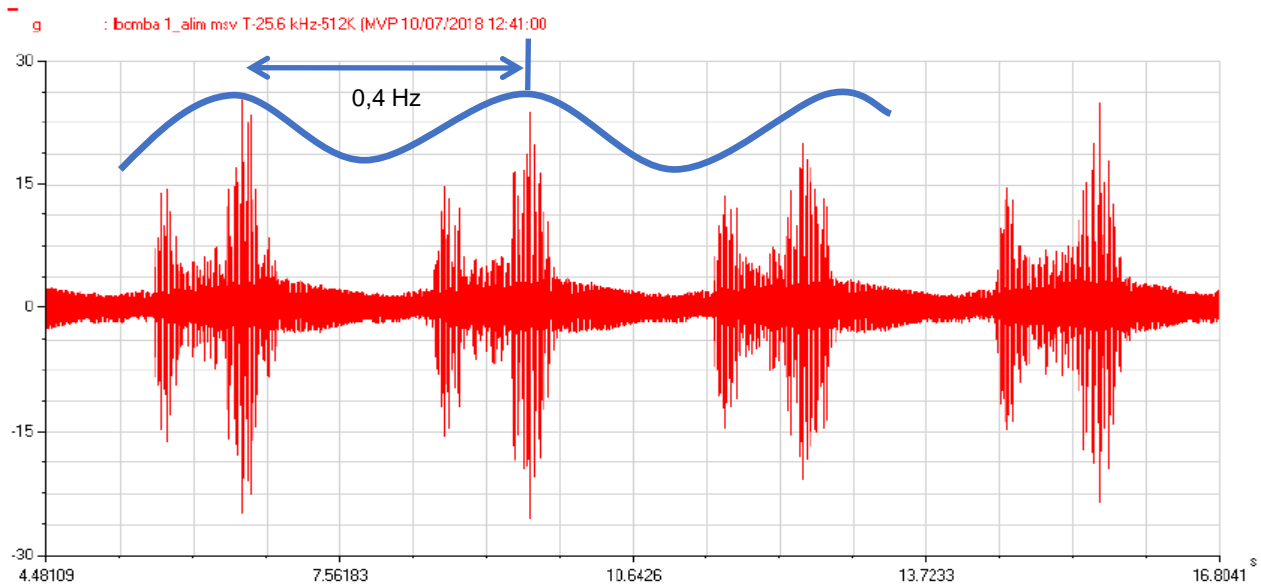


Bomba de alimentación Central Nueva Renca



Datos de las 3 señales de voltaje

Datos de las 3 señales de corriente

Electrical Status Screen

Operating condition: Rot Spd Logic 49.7 On

Parameters	C1	C2	C3	V1	V2	V3		
Power Factor	1.00	1.000	1.000				Running speed	2980
RMS Value	21.1	21.0	21.2	265	264	264	Demand power	0.097
Peak Value	29.8	29.7	29.9	374	374	375	Motor load	5.5
Crest Factor	1.41	1.41	1.41	1.41	1.41	1.42	Motor efficiency	1.42
Impedance	0.126	0.126	0.125				OutPut power	9.9
Static eccentricity							OutPut torque	537
Dynamic eccentricity							Volt var. from NP	
Stator mech. damage							Rotor bar damage	6
Bearing damage							Mech unbal misallo	
Electrical unbalanced							Line frequency	50.0
THD All							Voltage Distorsion	0.0
Max inrush current							THDF Factor	0.0
Duration							PolePass side bank	1.4

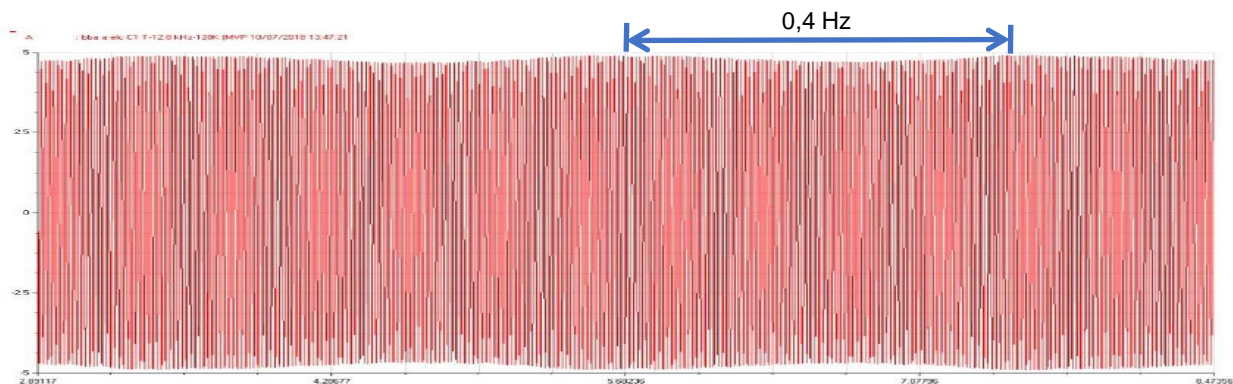
Signals:

	C1	C2	C3	V1	V2	V3
LF TW	WAV	WAV	WAV	WAV	WAV	WAV
LF demodul. TW	WAV			WAV		
HF Spectrum	FFT	FFT	FFT	FFT	FFT	FFT
LF Spectrum	FFT			FFT		
LF demodul. Spect.	FFT			FFT		

Global Parameters (Parametros globales):

- Spectrum concatenation
- Long term
- Short term
- On condition

Parametros globales



- Correlación análisis corriente y voltaje, y vibratorio para el diagnóstico de falla en sistema motobomba con descansos hidrodinámicos